

## EMPLOYMENT **OBSERVATORY**

### Profile of the unemployed **job-seekers** in the city of Alzira (October 2021).

**TOTAL job-seekers: 4,060**

Chart 1. Proportion of men and women job-seekers (number and percentage of the total)

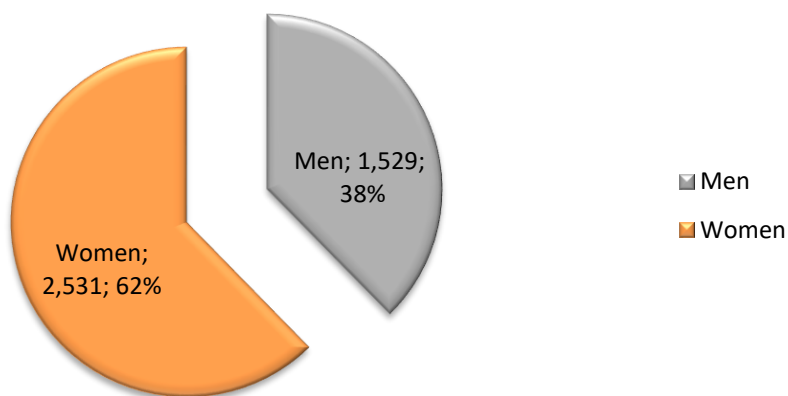
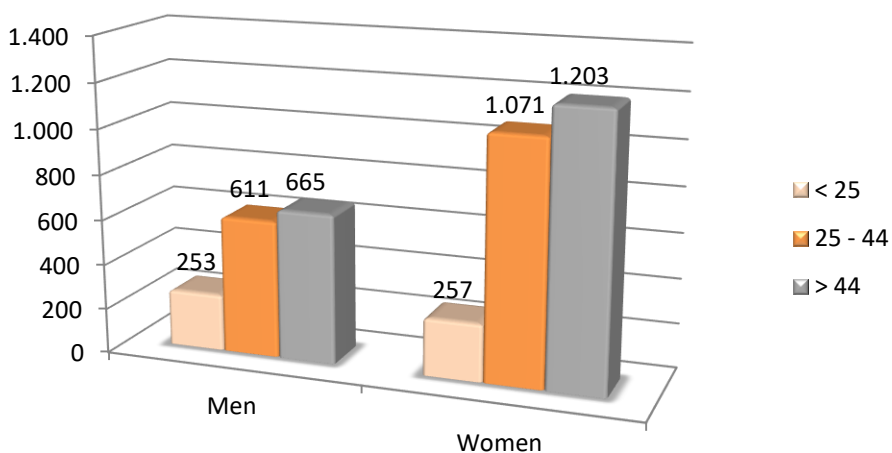
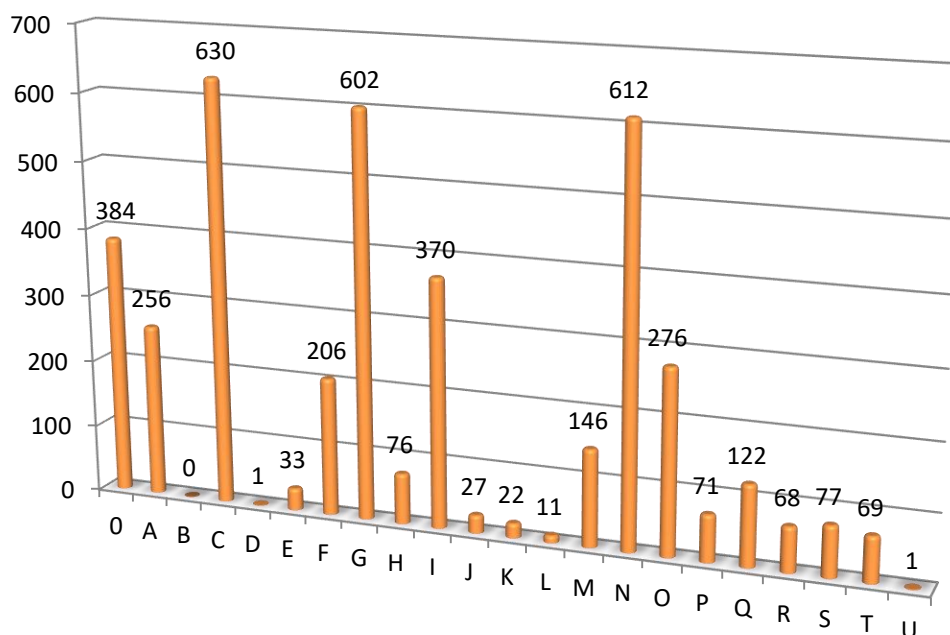


Chart 2. Unemployed job-seekers by gender and age

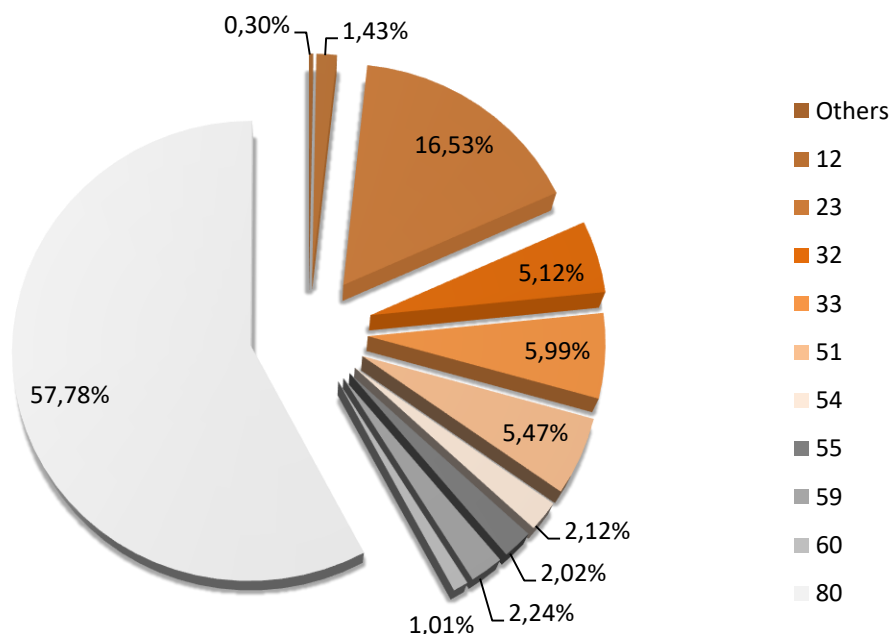


**Graph 3. Distribution of unemployed/jobseekers by economic activity**



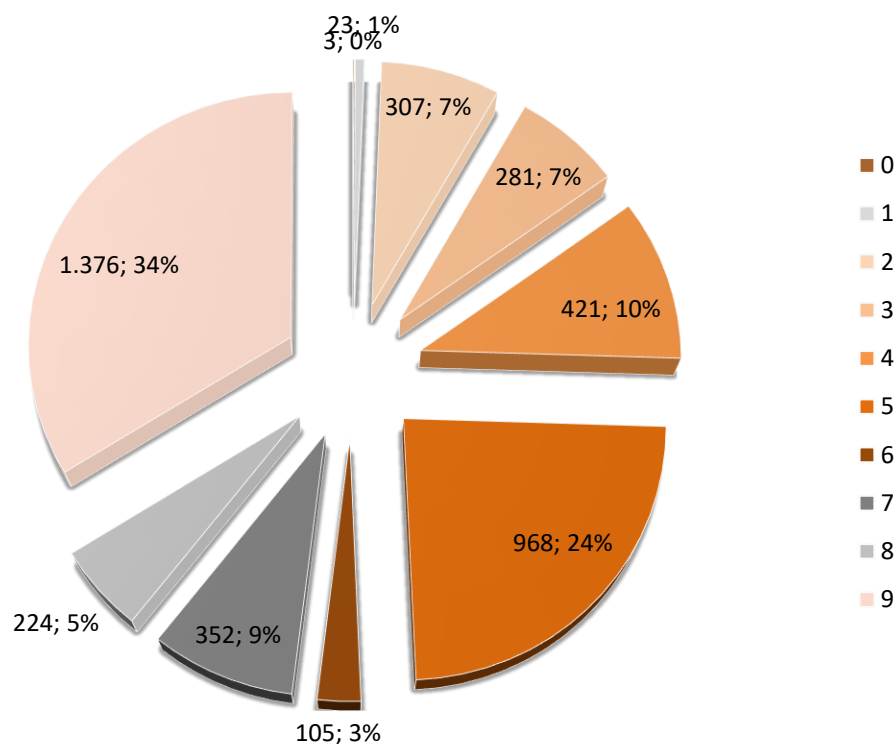
Economic activities (CNAE, 2009)	
0	WITHOUT ECONOMIC ACTIVITY
A	AGRICULTURE, -LIVESTOCK FARMING, FORESTRY AND FISHERY
B	EXTRACTIVE INDUSTRIES
C	MANUFACTURING INDUSTRY
E	ELECTRICITY, GAS, STEAM AND AIR CONDITIONING SUPPLY
F	CONSTRUCTION
G	WHOLESALE AND RETAIL TRADE; REPAIR OF MOTOR VEHICLES AND MOTORCYCLES
H	TRANSPORT AND STORAGE
I	ACCOMMODATION AND FOOD SERVICE ACTIVITIES
J	INFORMATION AND COMMUNICATIONS
K	FINANCIAL AND INSURANCE ACTIVITIES
L	REAL ESTATE ACTIVITIES
M	PROFESIONAL, SCIENTIFIC AND TECHNICAL ACTIVITIES
N	ADMINISTRATIVE AND SUPPORT SERVICE ACTIVITIES
O	PUBLIC ADMINISTRATION AND DEFENSE; COMPULSORY SOCIAL SECURITY
P	EDUCATION
Q	HUMAN HEALTH AND SOCIAL WORK ACTIVITIES
R	ARTS, ENTERTAINMENT AND RECREATION
S	OTHER SERVICES ACTIVITIES
T	ACTIVITIES OF HOUSEHOLDS AS EMPLOYERS; UNDIFFERENTIATED GOODS- AND SERVICES-PRODUCING ACTIVITIES OF HOUSEHOLDS FOR OWN USE
U	ACTIVITIES OF EXTRATERRITORIAL ORGANISATIONS AND BODIES

**Chart 4. Distribution of job-seekers by level of education and training.**



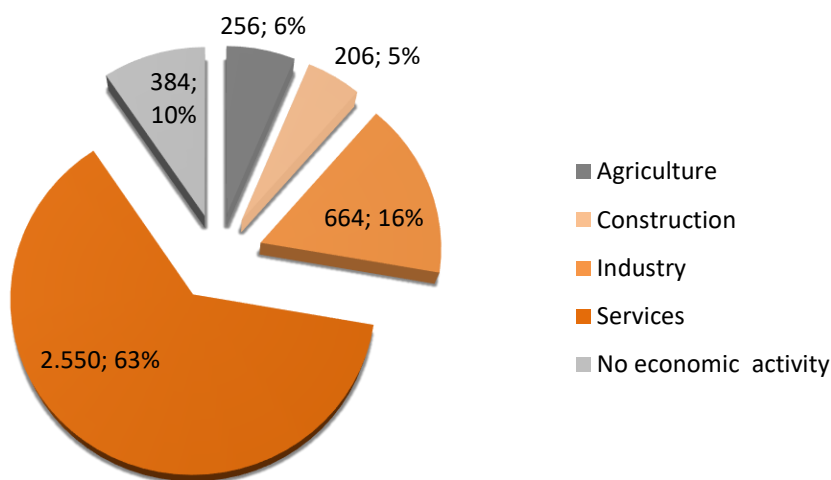
	Level of education and training (CNAE, 2009)	Individuals	%
<b>Others</b>	TRAINING AND JOB INSERTION PROGRAMMES, INTERMEDIATE GRADE OF MUSIC AND DANCE, UNIVERSITY'S SPECIAL DEGREES AND OWN TITLES, PROFESSIONAL SPECIALISATION, PhD	12	0,30%
<b>12</b>	COMPLETE PRIMARY STUDIES	58	1,43%
<b>23</b>	CERTIFICATE OF COMPULSORY SECONDARY OR EQUIVALENT	671	16,53%
<b>32</b>	GENERAL CERTIFICATE OF SECONDARY SCHOOL (HIGH SCHOOL DEGREE)	208	5,12%
<b>33</b>	UNDERGRADUATE CERTIFICATE IN HIGHER EDUCATION IN SPECIFIC PROFESSIONAL TRAINING IN PLASTIC ARTS, DESIGN AND SPORTS	243	5,99%
<b>51</b>	GRADUATE CERTIFICATE IN HIGHER EDUCATION OF IN SPECIFIC PROFESSIONAL TRAINING AND EQUIVALENTS IN PLASTIC ARTS, DESIGN AND SPORTS	222	5,47%
<b>54</b>	UNIVERSITY DEGREE OF 1ST CYCLE AND EQUIVALENTS OR PERSONS WHO HAVE COMPLETED AT LEAST 3 COURSES OF A BACHELOR DEGREE OF LICENSE OR EQUIVALENT CREDITS ( 3-YEARS CYCLE OF POST-SECONDARY EDUCATION)	86	2,12%
<b>55</b>	UNIVERSITY DEGREE OF 1ST AND 2ND CYCLE; SECOND CYCLE-ONLY AND EQUIVALENT. (4-YEARS CYCLE OF POST SECONDARY EDUCATION, 240 ECTS)	82	2,02%
<b>59</b>	GRADO UNIVERSITARIA: UNIVERSITY DEGREE EQUIVALENT TO 240 ECTS (4-YEAR POST-SECONDARY EDUCATION)	91	2,24%
<b>60</b>	HIGHER EDUCATION UNIVERSITY MASTER'S DEGREE	41	1,01%
<b>80</b>	WITHOUT STUDIES + INCOMPLETE STUDIES	2.346	57,78%
<b>TOTAL</b>		<b>4.060</b>	<b>100,00%</b>

**Graph 5. Distribution of job-seekers by occupational group**



Main occupational groups (CNAE 2009)
0 Military occupations
1 Directors and managers
2 Technicians; scientific and intellectual professionals
3 Technicians and associate professionals
4 Accounting, administration and other office employees
5 Catering personal; Personal and protective services workers; Market sales workers
6 Skilled agricultural, fishery, livestock and forestry workers;
7 Craft and skilled workers of the manufacturing and construction industries (Installation and machinery operators and assemblers)
8 Installation and machinery operators and assemblers
9 Elementary occupations

**Graph 6. Proportion by economic sectors**



#### Profile summary of the unemployed (October 2021)

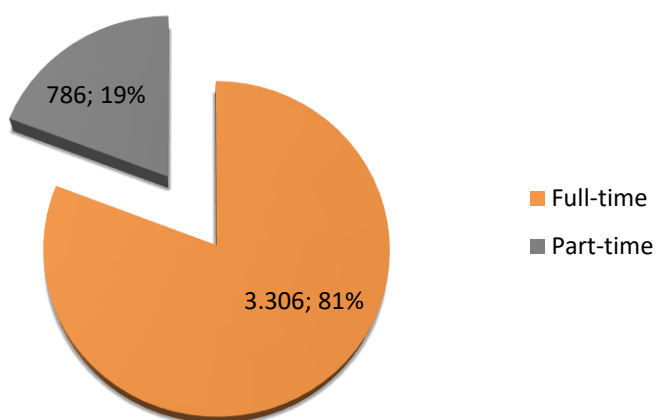
- 4,060 people were unemployed in October (38% men, 62% women). The job-seeker profile with the highest unemployment rate (57.78%) matches that of a lower education background group (high school graduate without graduate degree or equivalent). It is followed by people with GCSEs (16.53%). Following these, the following education background groups are: entry level college certificates (5.99%); high level college certificates (5.47%) in specific vocational training, plastic art and design and sports. Finally, unemployed job-seekers with higher education degrees (undergraduate and master's degrees) represent a minority (2.24% and 1.01%, respectively).
- These data confirm that, in October, the service sector is by far the one with the highest rate of unemployment (63%), followed by industry (16%).
- Furthermore, the results from October 2021 sorted by employment groups show that the category of elementary occupations represents the great bulk of unemployed people (34%), followed by catering, personal and protective services workers, and sellers (24%).

## PROFILE OF REGISTERED **EMPLOYMENT** CONTRACTS

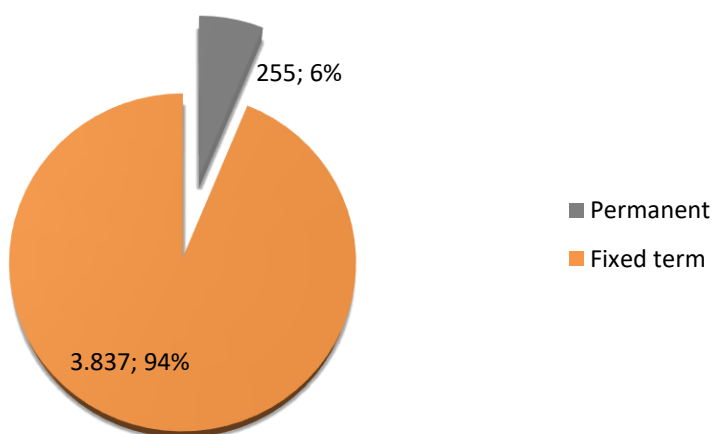
### Profile of the **employment** contracts signed in the city of Alzira (October 2021)

**TOTAL contracts: 4,092**

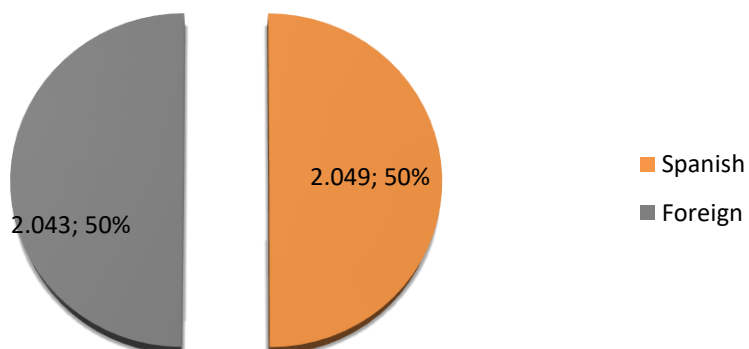
Graph 7. By type of working day



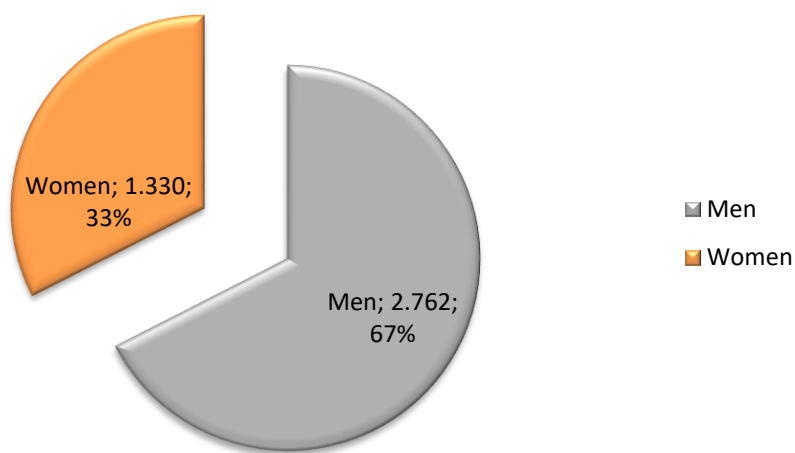
Graph 8. By type of contract



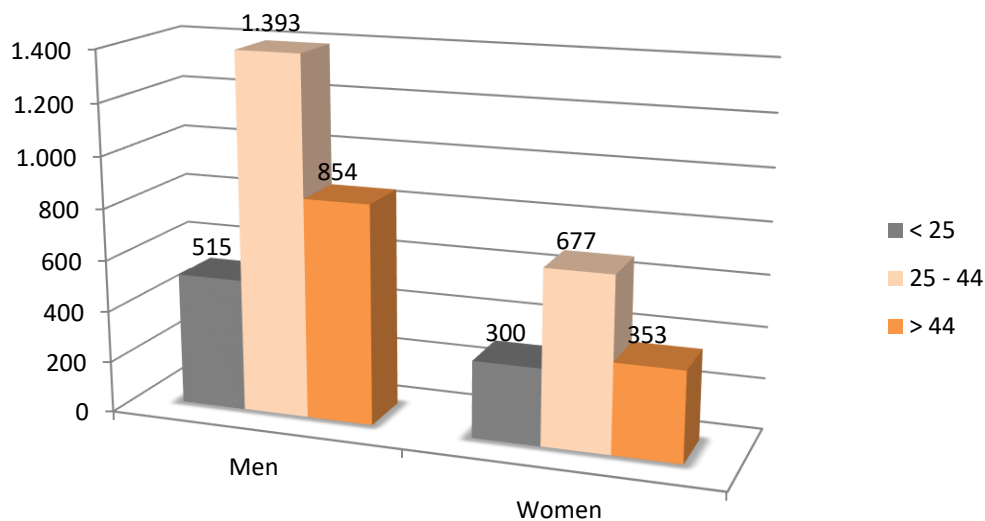
**Graph 9. By nationality.**



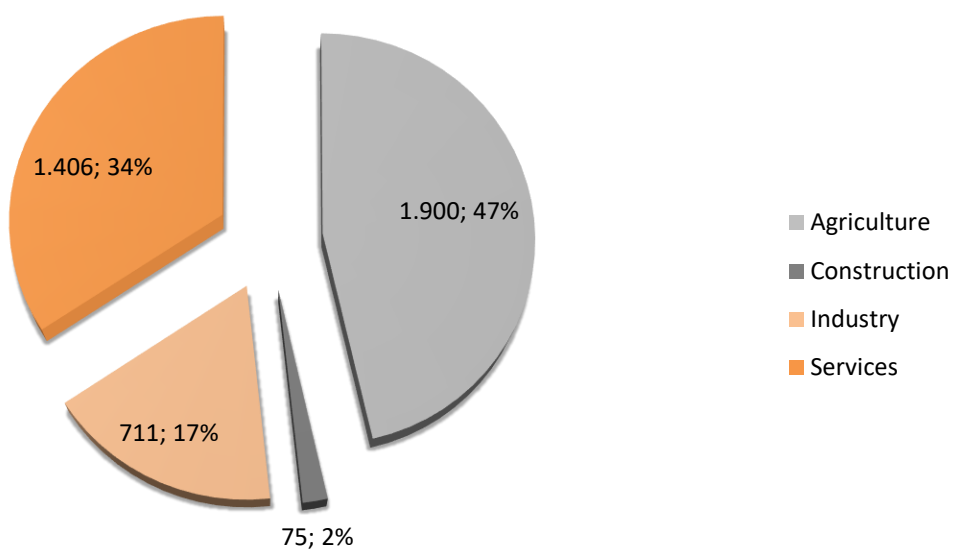
**Graph 10. By gender.**



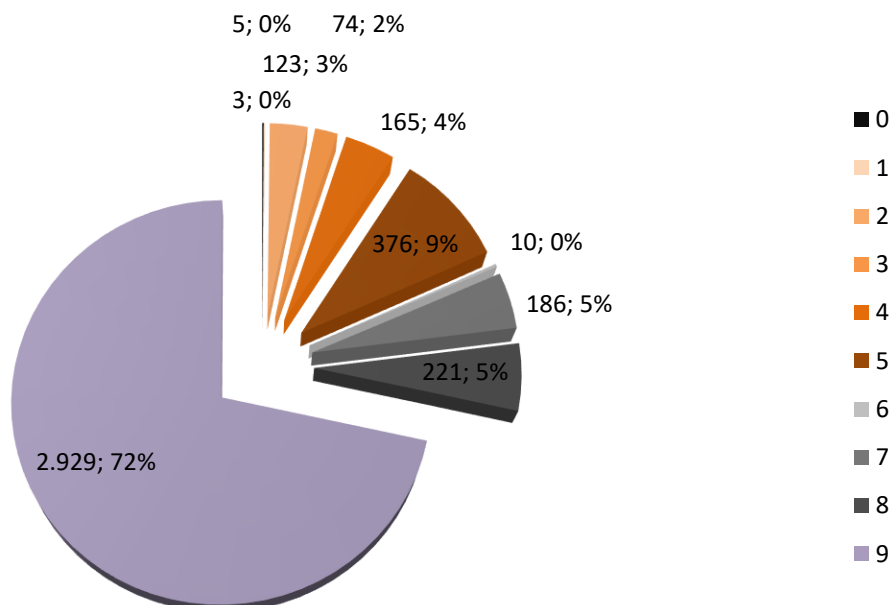
**Graph 11. By age and gender.**



**Graph 12. By activity sectors.**



**Graph 13. Proportion by employment groups.**



**Legend of the LABORA occupation groups (CNAE 2009)**

Group of the main occupation
0 Military occupations
1 Directors and managers
2 Technicians and scientific and intellectual professionals
3 Technicians; support professionals
4 Accounting, administrative and other office employees
5 Restoration, personal, protection and seller service workers
6 Qualified workers in the agricultural, livestock, forestry and fishing sectors
7 Craftsmen and skilled workers of the manufacturing and construction industries (except operators of facilities and machinery)
8 Operators of facilities and machinery, and assemblers
9 Elemental occupations



## Profile summary of the people hired (October 2021)

- **4,092** people were hired in the month of October (67% men, 33% women). The great majority were temporary contracts (94%).
- It can be noticed that the agriculture sector is the sector with the highest proportion of contracts (47%), followed by the services sector (34%), the industry sector (34%) and finally construction (2%).
- Furthermore, the greatest number of vacancies offered was in the field of elemental occupations 72%, followed by restoration, personal, protection and seller service workers with a 9%.