

EMPLOYMENT OBSERVATORY

Profile of the unemployed **job-seekers** in the city of Alzira (March 2023).

TOTAL job-seekers: 3.030

Chart 1. Proportion of men and women job-seekers (number and percentage of the total)

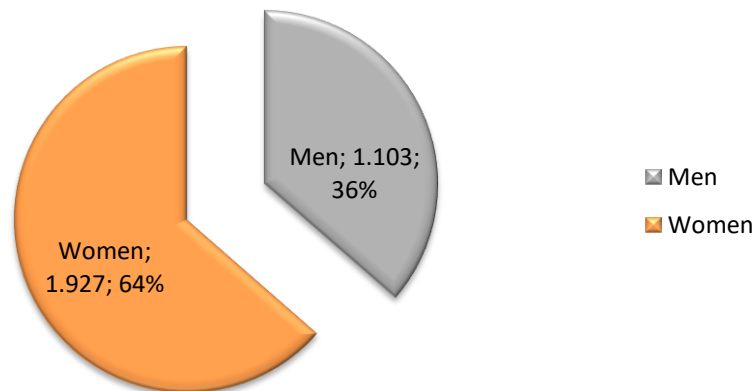
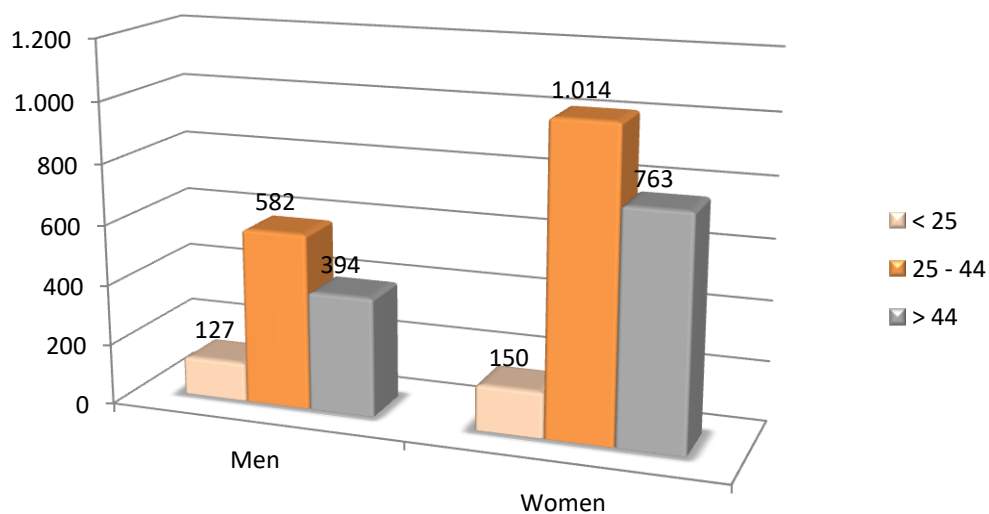
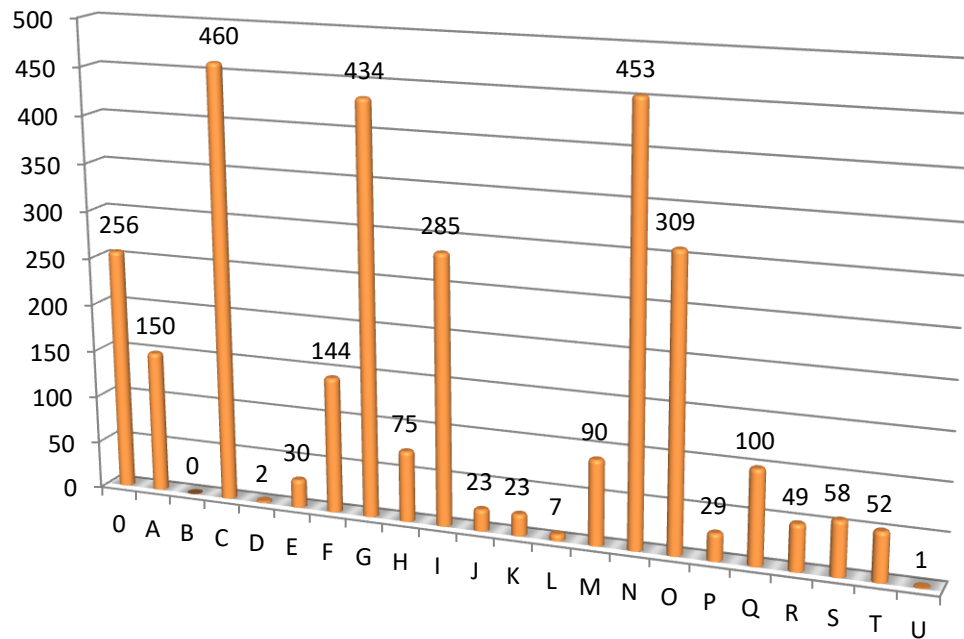


Chart 2. Unemployed job-seekers by gender and age

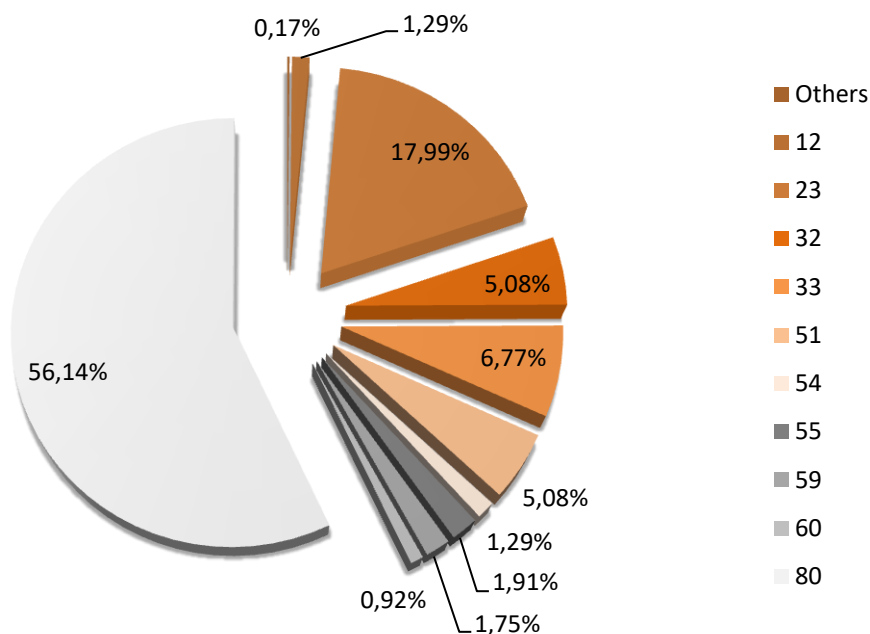


Graph 3. Distribution of unemployed/jobseekers by economic activity



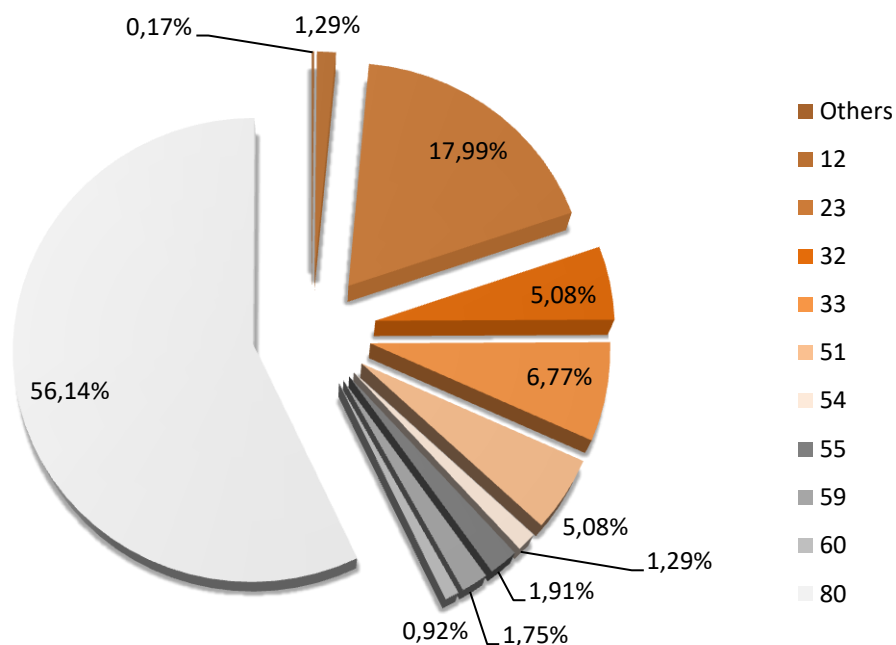
| Economic activities (CNAE, 2009) |
|--|
| 0 WITHOUT ECONOMIC ACTIVITY |
| A AGRICULTURE, -LIVESTOCK FARMING, FORESTRY AND FISHERY |
| B EXTRACTIVE INDUSTRIES |
| C MANUFACTURING INDUSTRY |
| ELECTRICITY, GAS, STEAM AND AIR CONDITIONING SUPPLY |
| E WATER SUPPLY; SEWERAGE, WASTE MANAGEMENT AND REMEDIATION ACTIVITIES |
| F CONSTRUCTION |
| G WHOLESALE AND RETAIL TRADE; REPAIR OF MOTOR VEHICLES AND MOTORCYCLES |
| H TRANSPORT AND STORAGE |
| I ACCOMMODATION AND FOOD SERVICE ACTIVITIES |
| J INFORMATION AND COMMUNICATIONS |
| K FINANCIAL AND INSURANCE ACTIVITIES |
| L REAL ESTATE ACTIVITIES |
| M PROFESIONAL, SCIENTIFIC AND TECHNICAL ACTIVITIES |
| N ADMINISTRATIVE AND SUPPORT SERVICE ACTIVITIES |
| O PUBLIC ADMINISTRATION AND DEFENSE; COMPULSORY SOCIAL SECURITY |
| P EDUCATION |
| Q HUMAN HEALTH AND SOCIAL WORK ACTIVITIES |
| R ARTS, ENTERTAINMENT AND RECREATION |
| S OTHER SERVICES ACTIVITIES |
| T ACTIVITIES OF HOUSEHOLDS AS EMPLOYERS; UNDIFFERENTIATED GOODS- AND SERVICES-PRODUCING ACTIVITIES OF HOUSEHOLDS FOR OWN USE |
| U ACTIVITIES OF EXTRATERRITORIAL ORGANISATIONS AND BODIES |

Chart 4. Distribution of job-seekers by level of education and training.



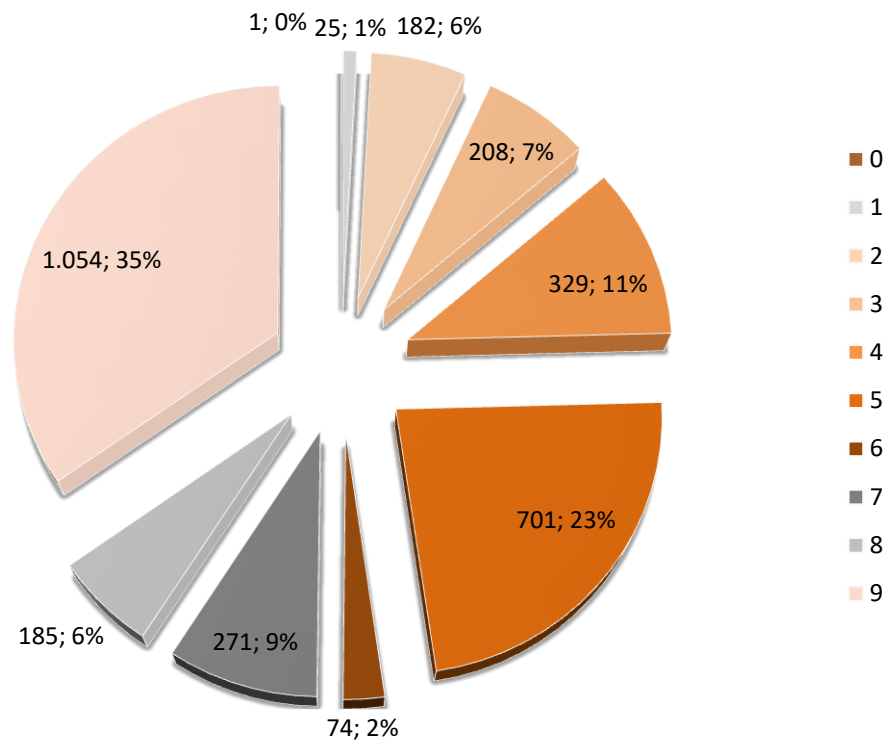
| | Level of education and training (CNAE, 2009) | Individuals | % |
|---------------|--|--------------|----------------|
| Others | TRAINING AND JOB INSERTION PROGRAMMES, INTERMEDIATE GRADE OF MUSIC AND DANCE, UNIVERSITY'S SPECIAL DEGREES AND OWN TITLES, PROFESSIONAL SPECIALISATION, PhD | 5 | 0,17% |
| 12 | COMPLETE PRIMARY STUDIES | 39 | 1,29% |
| 23 | CERTIFICATE OF COMPULSORY SECONDARY OR EQUIVALENT | 545 | 17,99% |
| 32 | GENERAL CERTIFICATE OF SECONDARY SCHOOL (HIGH SCHOOL DEGREE) | 154 | 5,08% |
| 33 | UNDERGRADUATE CERTIFICATE IN HIGHER EDUCATION IN SPECIFIC PROFESSIONAL TRAINING IN PLASTIC ARTS, DESIGN AND SPORTS | 205 | 6,77% |
| 51 | GRADUATE CERTIFICATE IN HIGHER EDUCATION OF IN SPECIFIC PROFESSIONAL TRAINING AND EQUIVALENTS IN PLASTIC ARTS, DESIGN AND SPORTS | 154 | 5,08% |
| 54 | UNIVERSITY DEGREE OF 1ST CYCLE AND EQUIVALENTS OR PERSONS WHO HAVE COMPLETED AT LEAST 3 COURSES OF A BACHELOR DEGREE OF LICENSE OR EQUIVALENT CREDITS (3-YEARS CYCLE OF POST-SECONDARY EDUCATION) | 39 | 1,29% |
| 55 | UNIVERSITY DEGREE OF 1ST AND 2ND CYCLE; SECOND CYCLE-ONLY AND EQUIVALENT. (4-YEARS CYCLE OF POST SECONDARY EDUCATION, 240 ECTS) | 58 | 1,91% |
| 59 | GRADO UNIVERSITARIA: UNIVERSITY DEGREE EQUIVALENT TO 240 ECTS (4-YEAR POST-SECONDARY EDUCATION) | 53 | 1,75% |
| 60 | HIGHER EDUCATION UNIVERSITY MASTER'S DEGREE | 28 | 0,92% |
| 80 | WITHOUT STUDIES + INCOMPLETE STUDIES | 1.701 | 56,14% |
| TOTAL | | 3.030 | 100,00% |

Graph 5. Distribution of job-seekers by occupational group



| Main occupational groups (CNAE 2009) |
|--|
| 0 Military occupations |
| 1 Directors and managers |
| 2 Technicians; scientific and intellectual professionals |
| 3 Technicians and associate professionals |
| 4 Accounting, administration and other office employees |
| 5 Catering personal; Personal and protective services workers; Market sales workers |
| 6 Skilled agricultural, fishery, livestock and forestry workers; |
| 7 Craft and skilled workers of the manufacturing and construction industries (Installation and machinery operators and assemblers) |
| 8 Installation and machinery operators and assemblers |
| 9 Elementary occupations |

Graph 6. Proportion by economic sectors



Profile summary of the unemployed (March 2023)

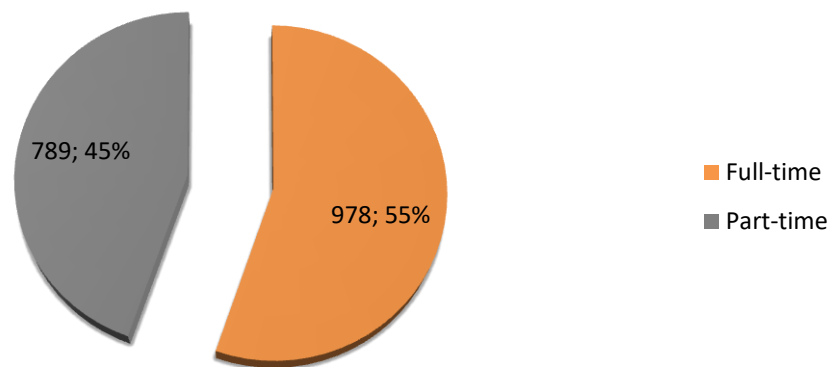
- **3.030** people were unemployed in March (36% men, 64% women). The job-seeker profile with the highest unemployment rate (56,14%) matches that of a lower education background group (high school graduate without graduate degree or equivalent). It is followed by people with GCSEs (17,99%). Following these, the following education background groups are: entry level college certificates (6,77%); and general certificate of secondary school (5,08%). Finally, unemployed job-seekers with higher education degrees (undergraduate and master's degrees) represent a minority (1,75% and 0,92%, respectively).
- These data confirm that, in February, the service sector is by far the one with the highest rate of unemployment (66%), followed by industry (16%).
- Furthermore, the results from March 2023 sorted by employment groups show that the category of elementary occupations represents the great bulk of unemployed people (35%), followed by catering, personal and protective services workers, and sellers (23%).

PROFILE OF REGISTERED **EMPLOYMENT** CONTRACTS

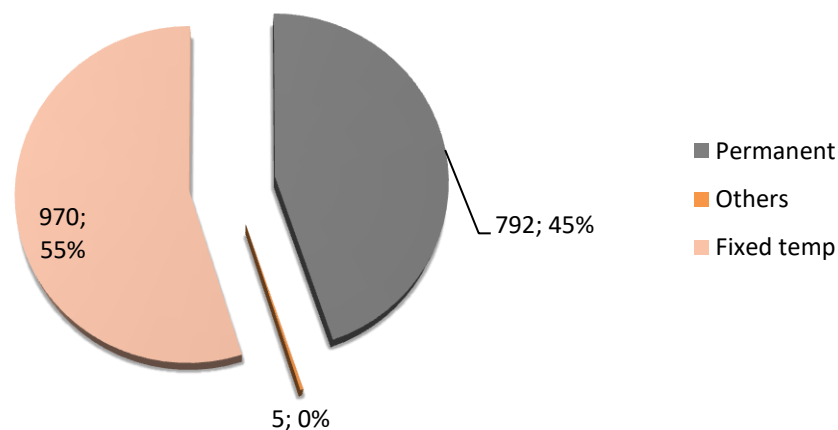
Profile of the **employment** contracts signed in the city of Alzira (March 2023)

TOTAL contracts: 1.767

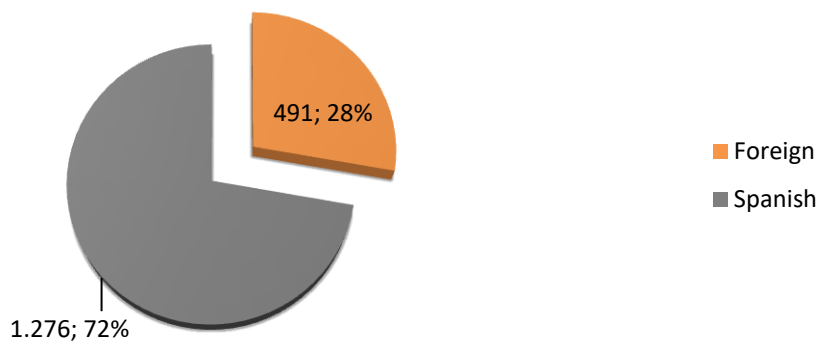
Graph 7. By type of working day



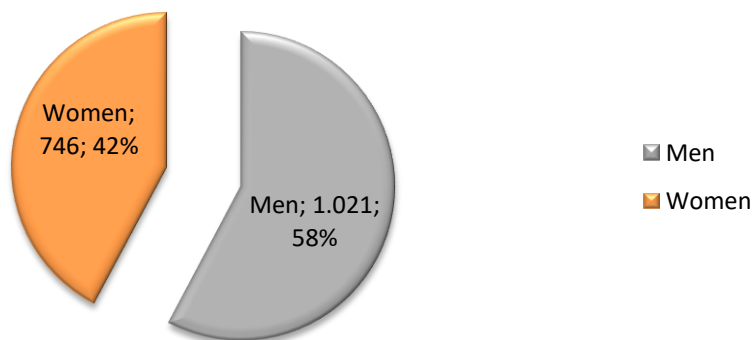
Graph 8. By type of contract



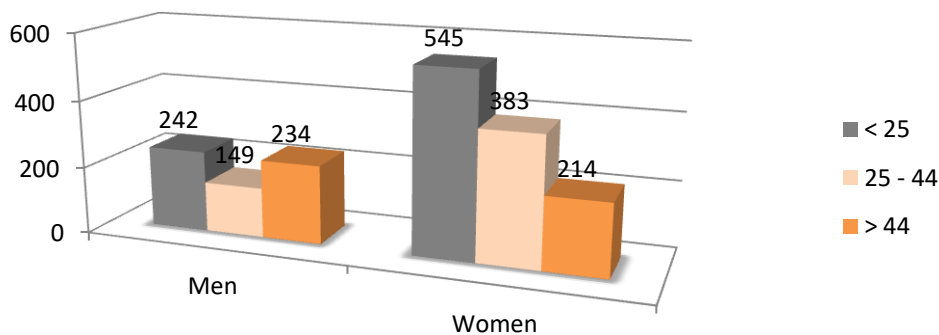
Graph 9. By nationality.



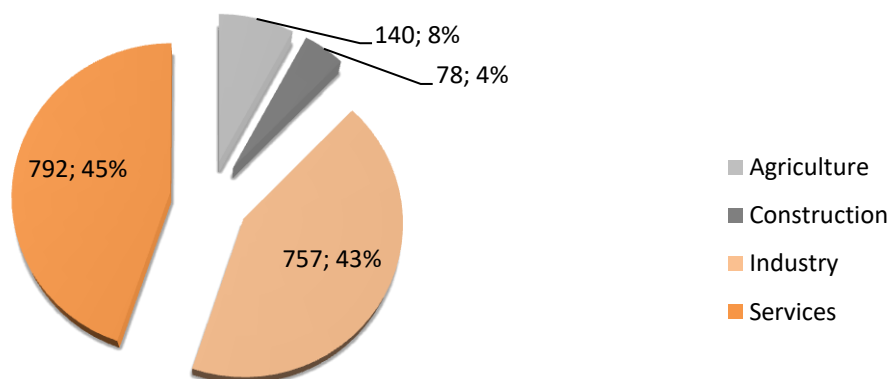
Graph 10. By gender.



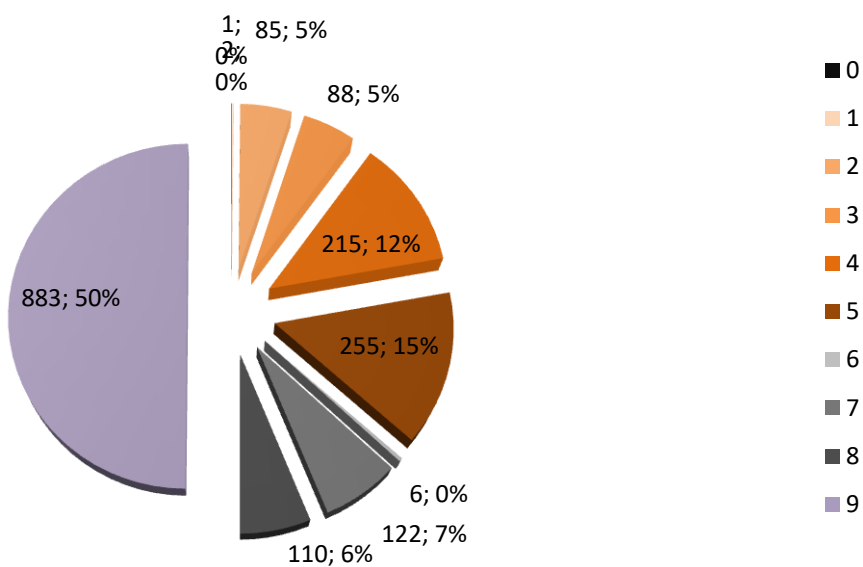
Graph 11. By age and gender.



Graph 12. By activity sectors.



Graph 13. Proportion by employment groups.



Legend of the LABORA occupation groups (CNAE 2009)

| Group of the main occupation |
|---|
| 0 Military occupations |
| 1 Directors and managers |
| 2 Technicians and scientific and intellectual professionals |
| 3 Technicians; support professionals |
| 4 Accounting, administrative and other office employees |
| 5 Restoration, personal, protection and seller service workers |
| 6 Qualified workers in the agricultural, livestock, forestry and fishing sectors |
| 7 Craftsmen and skilled workers of the manufacturing and construction industries (except operators of facilities and machinery) |
| 8 Operators of facilities and machinery, and assemblers |
| 9 Elemental occupations |

Profile summary of the people hired (March 2023)

- **1.767** people were hired in the month of March (58% men, 42% women). The great majority were permanent contracts (55%).
- It can be noticed that the services sector is the sector with the highest proportion of contracts (45%), followed by the industry sector (43%), agriculture (8%) and construction (4%).
- Furthermore, the greatest number of vacancies offered was in the field of elemental occupations 50%, followed by administrative employees with a 15%.